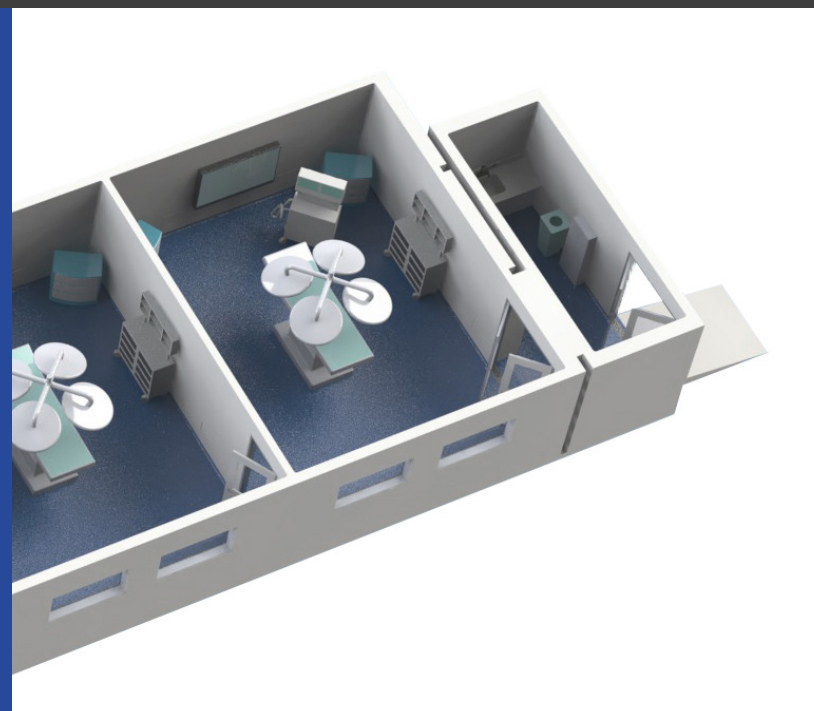
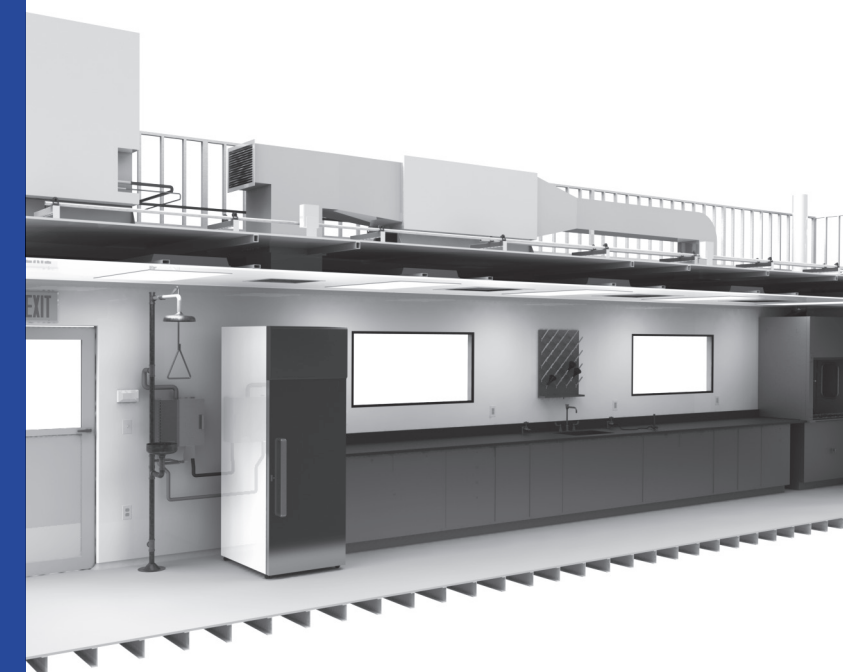


# CLEAN<sup>3</sup> DEPLOYABLE SYSTEMS



CLEAN-CONTROLLED-CUBICLES  
[WWW.CLEAN-CUBED.COM](http://WWW.CLEAN-CUBED.COM)



## CLEAN<sup>3</sup> MODULAR SYSTEMS™ by AWS Bio-Pharma Technologies

*Clean, controlled, cubicles. Improving your aseptic processing exponentially! We provide state-of-the-art Modular Systems featuring innovative design, durable walls, flexible floorspace, flush connections, dual ceiling systems, cost-effective construction and more!*



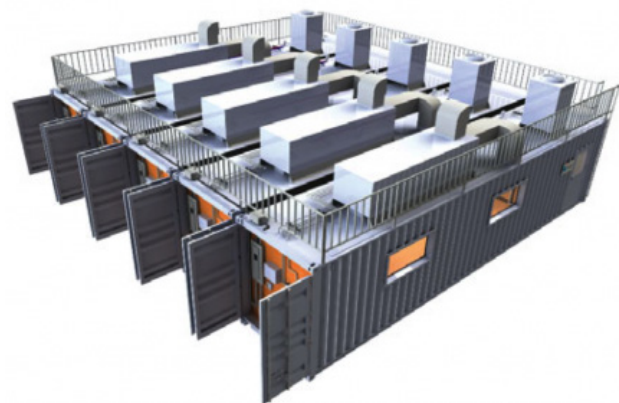
CLEAN<sup>3</sup>  
MODULAR SYSTEMS

## OUR CLEAN<sup>3</sup> DEPLOYABLE SYSTEMS

# 1 BIOMANUFACTURING MODULAR SUITES

# 2 ANALYTICAL LABORATORIES

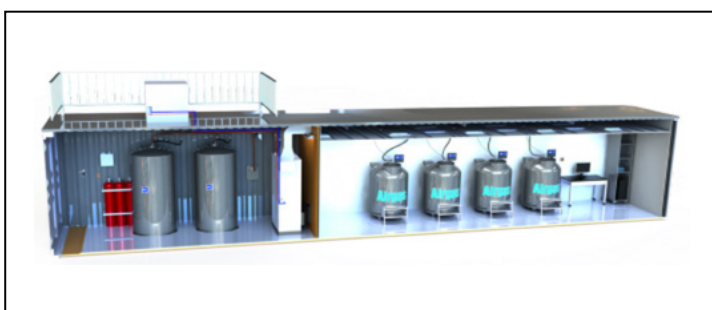
# 3 BIOREPOSITORIES



BIOMANUFACTURING SUITE



ANALYTICAL LABORATORY



BIOREPOSITORY

We design and manufacture cGMP modular cleanroom facilities customized to accommodate your company's specific needs. Our products are based on the intermodal container platform and designed to fit inside new or existing warehouse spaces. With our flexible, scalable, and transportable modular facilities, we guarantee a minimized capital cost and a shortened timeline to get your facility online.

### DESCRIPTION

- Patent Pending Interlocking System
- Scalable design to grow as you grow
- Truly modular and portable

### DIMENSIONS

#### CONTAINMENT INTERIOR

- **Length: 38' Width: 7' Height: 8'**

#### MATERIALS OF CONSTRUCTION

- Fully cGMP compliant
- Full coving between horizontal and vertical surfaces
- Flush fitting windows and ducting
- Materials capable of withstanding harsh cleaning chemicals
- Wall and flooring materials per customer preference

### CONTAINMENT EXTERIOR

#### DIMENSIONS

- **Length: 40' Width: 8' Height: 13'**

#### TRANSPORTATION

- **Highway:** Tractor Trailer
- **On-site:** Fork-lift

### HVAC SYSTEM

- Will be sized appropriately per customer needs

### AIR QUALITY

- ISO 5 - ISO 8 available
- Classification per customer process

### DESCRIPTION

- 22' Casework
- Fume hood
- Flammable liquids storage
- Emergency eye wash and shower

### DIMENSIONS

#### INDOOR DESIGN

- **Exterior:** 40'x 8'x13'
- **Interior:** 38'x7'x8'

#### OUTDOOR DESIGN

- **Exterior:** 53'x8'x13'
- **Interior:** 38'x7'x8'

### HVAC SYSTEM

- Comfort heating/cooling standard

### TRANSPORTATION

- **Highway:** Tractor trailer
- **On-site:** Fork-lift

### FACILITY OPTIONS

- Secured access
- Integration with building management systems
- Fire protection system
- Backup power

### DESCRIPTION

- cGMP compliant storage
- 24/7 sample temperature/equipment monitoring
- FDA 21 CFR Part 11 compliant monitoring
- **Low Temperature Storage**
- **Equipment:** Wired, powered and tracked independently
- Automated alerts
- Controlled access via card system

### FACILITY AND SERVICE OPTIONS

- Redundant HVAC System
- Inergen Fire Protection System
- Back-up power
- Inventory Management System
- Compliance, quality assurance, business continuity planning
- SOPs
- Comprehensive sample asset management

CLEAN-CONTROLLED-CUBICLES

[WWW.CLEAN-CUBED.COM](http://WWW.CLEAN-CUBED.COM)